



● ● ●  
**TruIV Block**

Product Code: **TIV100**

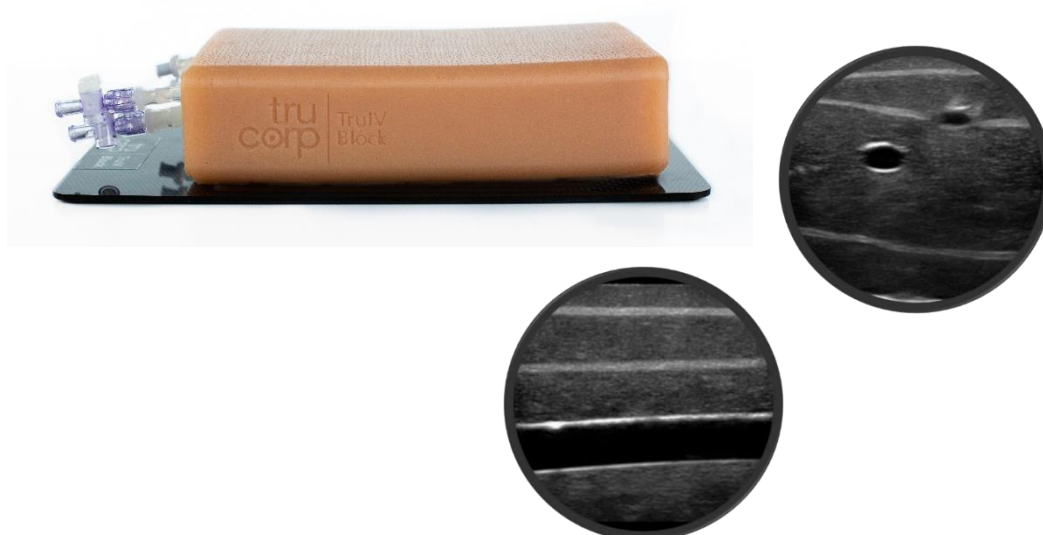
TruIV Block weight: 1.2kg

TruIV Block dimensions: 21 x 12 x 50cm

Part of the TruUltra product range, the TruIV Block allows learners to gain proficiency in the skills associated with IV cannulation. Featuring 8 veins (superficial and deep) ranging from 4-8mm in diameter, users can practise the use of ultrasound during IV procedures.

Fascia layers enhance realism, while the model is easily transportable and can be set-up in less than 5 minutes – perfect for a busy teaching environment. The TruUltra material known for its durability, will withstand repeated use of approximately 4000 needles before needing replaced.

TruIV Block is ideal for emergency medicine, radiology, surgical training programs, ultrasound training programs, simulation centres, medical education facilities, and ultrasound manufacturers for ultrasound education and demonstrations.



### *Ideal for training in...*

- **Intravenous (IV) Cannulation Techniques**

- Practice probe positioning and movement in soft responsive tissue
- Features 8 veins – 4 superficial and 4 deep, ranging from 4-8mm in size
- Lifelike vascular 'tenting' upon successful entry into the vessel
- Withdraw blood to provide positive feedback of successful cannulation

### *Features and benefits...*

- **Realistic:** Features 8 superficial and deep veins ranging from 4mm to 8mm. Fascia layers also feature for enhanced realism
- **Lifelike training:** Target veins of various sizes located superficially and deep
- **Positive user feedback:** Confirm successful IV cannulation procedures by withdrawing blood
- **Versatile:** Longitudinal and transverse anatomical viewing options
- **Easy-to-use:** Simplistic design with no electronics, allowing users to focus on learning with <5 mins initial set-up time
- **Durable:** Unique, self-regenerating TruUltra materials diminish the appearance of needle tracks to facilitate a high volume of repeated practice. The insert will facilitate approx. 4000 needle penetrations
- **Interchangeable:** Replacement insert is cost-effective to replace with no disruption to teaching time
- **Transportable:** Delivered in a durable carry case for easy transportation and safe storage
- **Universal:** Compatible with all Ultrasound machine brands

